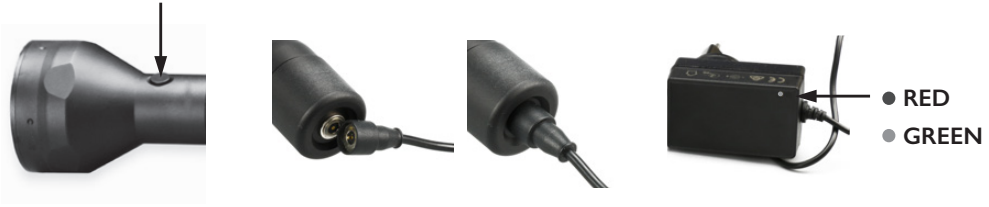


Charging the PDL-II Flashlight



1. Switch the PDL-II off.
2. Click the charge cable onto the backside of the PDL-II.
(this is a magnetic connection)
3. Plug the adapter in the electrical socket.
*The LED indicator will light up in "red" when the batteries are charging.
The LED indicator will light up in "green" once the batteries are fully charged.*

Safety Precautions

1. Avoid direct exposure to eyes, as the high intensity UV-A and White light beams, may harm your eyes.
2. This PDL-II **POWERLIGHT** is not a toy, please keep children away from it.
3. Only use Li-ion batteries sourced from Alcochem and designed for the **POWERLIGHTS** range. Use of other batteries may cause permanent damage to the flashlight.
4. Remove the batteries if unused for a long time, to avoid battery leakage which may damage other components.

What if there is a problem with your PDL inspection lamp?

If there is a problem with the PDL inspection lamp, please check our customer service online. The latest information of your product and RMA info is always available at our customer service page. www.uvafashlights.com/customer-service/

*Printing and typing errors, model changes and color deviations reserved.
See website for latest version.*



ALCOCHEM
HYGIENE

Zeilmaker 4
3861 SM Nijkerk
Tel.: +31 (0)33 299 4139

support@uvpowerlights.com



INSTRUCTION **MANUAL**



PDL-II **POWERLIGHT**

UV-A & White flashlight for professional inspection

ENGLISH

version 2.0

UV **POWERLIGHTS**

Flashlights for professional use

Check content: While unpacking, check for any signs of shipment damage and, if found, notify both transporter and supplier in writing within 8 days after receipt with full details of the damage that has occurred and retain the equipment and packing materials for inspection. Check that all parts have been received as ordered. Make sure that all packaging is removed from the machine before use.

Content of the box

1. PDL-II **POWERLIGHT**
2. Battery 3400 mAh 7.4V
3. Table holder
4. Adapter with fixed charging cable
5. Lens cap



User instructions

1. Unscrew end cap.
2. Place provided Li-ion battery into chamber.
a. Positive pole towards the head.
3. Screw end cap back on the unit.
4. Press button to operate.



Power on: When off, press the button firmly to turn on the flashlight.

3 different light modes:

1. Press button firmly, so you hear a click to power on in White Light Mode (50 %).
2. Press button softly to get the 2nd White Light Mode (100 %).
3. To activate UV-A Light press button softly again to the UV-A 365 nm Mode.

Power off: Press button firmly, so you hear a click, to turn power off.

Maintenance and attention points:

1. Only the supplied high performance rechargeable 7.4 V Li-ion battery **MUST** be used.
2. Avoid contact between chemicals and corrosive gasses.
The *PDL-II POWERLIGHT* is waterproof executed.
3. Users can lubricate the end cap screw thread one time per year to ensure smooth operation.
4. Use a soft brush and alcohol to clean, when required.
5. If the *PDL-II POWERLIGHT* is opened for repair, the warranty is void.
In case of a technical problem, please contact your distributor.
6. If the batteries needs to be recharged, use only the supplied inductive charger or an approved battery charger
Make sure that the polarity of the battery is not reversed, when placed in the charger.
Battery charging time takes from 4 to 5 hours. (empty to full)
7. The *PDL-II POWERLIGHT* is executed with an automatic temperature switch off, activated when the temperature of the Aluminium housing reached 50 °C. However it's recommended not to place the PDL-II, when switched on, with it's head on the surface, as the temperature can go up to around 100 °C.



Specifications

Power LED's	: 5x 5 W UV-A 365 nm i.c.w. 1x 5 W white Cree LED XPG2 S3
Lifetime LED's	: 20.000 hours
Drop proof	: Up to a drop height 1,2 m drop proof
Material	: Aluminum T6061, PremiumType III hard anodized abrasive finish
Color	: Black
Weight	: 336 Gram (incl battery)
Handling	: Full grip, anti drop design
Battery type	: 1x 18650 Li-ion rechargeable battery - Panasonic 7.4 V - 3400 mAh with overcharge protection
Battery life	: 3 operational hours (based on a switching of 1 hour UV-A and 2 hrs. of white light)
Electrical supply	: 100-240 V ~ 50-60 Hz
IP rating	: IP67
Switch	: Metal executed
Quality procedure	: ISO 9001
Life span	: Min. 5 years
Certificate	: Complies to IEC report (IEC 60598-2-8)
Manual	: Included in English language
Guarantee	: 2 years on electrical performance